

WHISTLER VALLEY TRAIL MAP

CAUTION, HAVE FUN

THIS IS A TWO-WAY, MULTI-USE TRAIL

Respect other users. Share the trail. Keep right. Pass on the left. Class 1 electric assist e-bikes to 32 km/hr. maximum permitted, all others are not.

IN CASE OF EMERGENCY: PHONE 911

DOGS

Dogs must be leashed unless in a dog off-leash park. Dog owners are required to pick up and properly dispose of dog waste. Bag it and bin it.

Learn more at whistler.ca/dogs

FIRESMART

Whistler is surrounded by beautiful forests. Enjoy all they have to offer but know that Whistler is a high-risk wildfire area. Do your part to prevent wildfires. Check fire danger ratings, follow campfire bans, and extinguish all smoking materials. **To report a wildfire or irresponsible behaviour call *5555 from a cell phone.**

Learn more at whistler.ca/fire or call 1.888.3.FOREST

BEAR SAFETY

Please help keep Whistler safe for bears and people.

- ◆ Never approach a bear.
- ◆ Never run away from a bear. Stay calm & back away slowly.
- ◆ Ensure bears never have access to food or garbage.
- ◆ Use bear-proof garbage bins.
- ◆ Carry out ALL garbage when using parks and trails.
- ◆ Don't leave food or food packaging in vehicles.
- ◆ Keep dogs on-leash.

Learn more at whistler.ca/bears

WHISTLER TRANSIT

The Whistler Transit System services all areas and neighbourhoods in Whistler. The system provides free service within Whistler Village to and from the Upper Village, Benchlands and Lost Lake Beach (in summer). All other areas and neighbourhoods are accessed by a fare system and route through Gondola Transit Exchange in Whistler Village. All buses are equipped with bike racks (capacity two per bus). See live bus locations, get projected stop arrival times, and plan trips at nextride.whistler.bctransit.com.

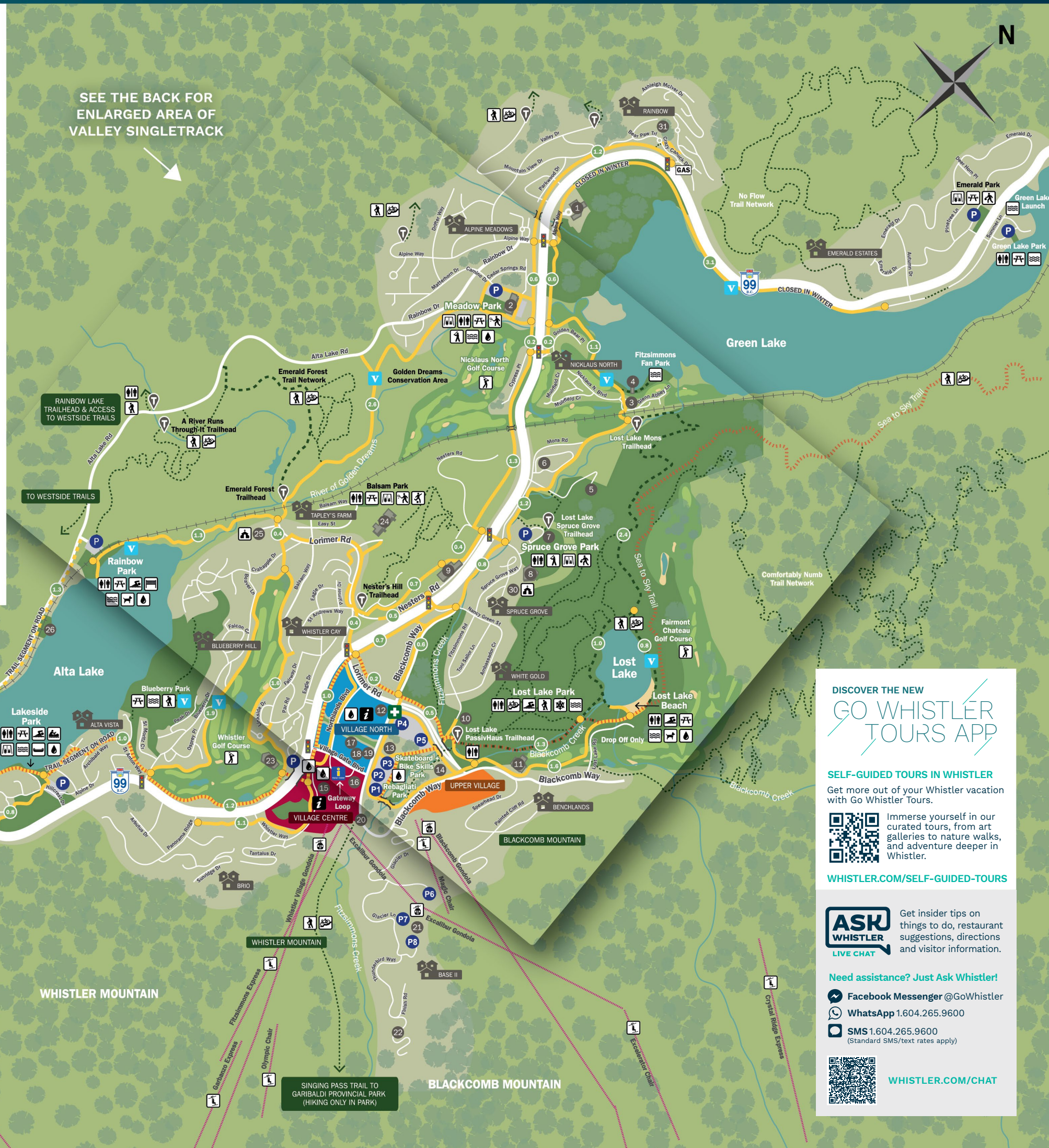
Exact change required and card payment not accepted. Learn more at bctransit.com/whistler or by calling 604.932.4020

LEGEND

- ROADWAY
- GRAVEL ROAD
- PAVED VALLEY TRAIL
- VALLEY TRAIL ON ROAD
- WIDE GRAVEL TRAIL
- OTHER TRAILS
- SEA TO SKY TRAIL
- GONDOLA/SKI LIFT
- RIVERS AND CREEKS
- RAILWAY
- NEIGHBOURHOOD
- DISTANCE IN KILOMETRES
- TRAIL HEAD
- PARKING AREA
- EMERGENCY HEALTH SERVICES
- PUBLIC WASHROOMS
- VISITOR CENTRE
- VILLAGE HOST
- VIEWPOINT
- PICNIC AREA
- GOLF COURSE
- WINTER ACTIVITIES
- HIKING
- PLAYGROUND
- BIKING
- MOUNTAIN BIKING
- CANOEING
- SWIMMING
- SOCCER
- TENNIS
- BASEBALL
- BASKETBALL
- VOLLEYBALL
- LAKE, RIVER ACCESS
- WATERCRAFT RENTALS
- DOG OFF-LEASH PARK
- GONDOLA
- SKI LIFT
- RAILWAY
- CHURCH
- WATER BOTTLE FILL STATION
Only available in summer

MAP DIRECTORY

- ### INFORMATION
- 16 Whistler Visitor Centre
- ### EMERGENCY SERVICES
- 12 Whistler Health Care Centre
- ### EDUCATION CENTRES
- 24 Myrtle Phillip Community School
 - 28 Spring Creek Community School
 - 1 Whistler Secondary Community School
- ### RECREATIONAL & CULTURAL CENTRES
- 13 Audain Art Museum
 - 11 Chateau Whistler Golf Club
 - 21 bubly™ Tube Park
 - 4 Float Plane Dock
 - 10 Lost Lake PassivHaus
 - 19 Maury Young Arts Centre
 - 2 Meadow Park Sports Centre
 - 3 Nicklaus North Golf Clubhouse
 - 26 Point Artist Run Centre
 - 6 Riverside Parkbridge Campground
 - 14 Squamish Lil'wat Cultural Centre
 - 8 Spruce Grove Field House
 - 29 Whistler Athlete's Centre
 - 15 Whistler Conference Centre
 - 7 Whistler Disc Golf Course
 - 23 Whistler Golf Course Clubhouse
 - 17 Whistler Museum
 - 18 Whistler Public Library
 - 22 Whistler Sliding Centre
- ### LANDMARKS
- 5 Scandivave Spa
 - 9 Nesters Commercial Area
 - 20 Gondola Transit Exchange
 - 25 Whistler Catholic Church
 - 30 Whistler Community Church
 - 27 Train Station
 - 31 Rainbow Commercial Area



DISCOVER THE NEW
GO WHISTLER TOURS APP

SELF-GUIDED TOURS IN WHISTLER
Get more out of your Whistler vacation with Go Whistler Tours.

Immerse yourself in our curated tours, from art galleries to nature walks, and adventure deeper in Whistler.

WHISTLER.COM/SELF-GUIDED-TOURS

ASK WHISTLER LIVE CHAT
Get insider tips on things to do, restaurant suggestions, directions and visitor information.

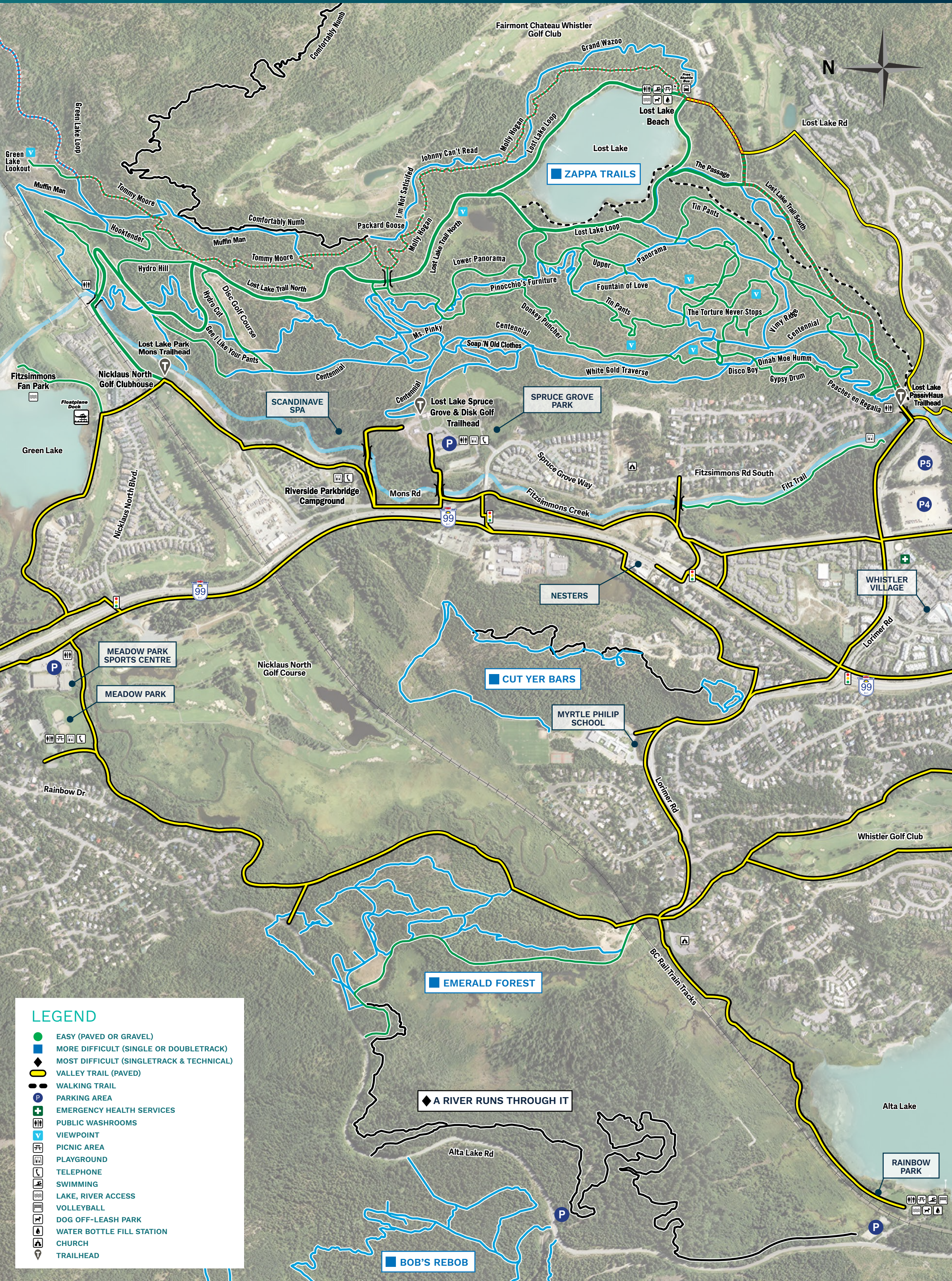
Need assistance? Just Ask Whistler!

- Facebook Messenger @GoWhistler
- WhatsApp 1.604.265.9600
- SMS 1.604.265.9600 (Standard SMS/text rates apply)

WHISTLER.COM/CHAT

RECYCLED Paper made from recycled material FSC® C014956
Tourism Whistler is pleased to produce this map as a completely Carbon Neutral print project through Hemlock Printers and Offsetters.

WHISTLER VALLEY SINGLETRACK



LEGEND

- EASY (PAVED OR GRAVEL)
- MORE DIFFICULT (SINGLE OR DOUBLETRACK)
- ◆ MOST DIFFICULT (SINGLETRACK & TECHNICAL)
- VALLEY TRAIL (PAVED)
- WALKING TRAIL
- P PARKING AREA
- + EMERGENCY HEALTH SERVICES
- W PUBLIC WASHROOMS
- v VIEWPOINT
- P PICNIC AREA
- P PLAYGROUND
- T TELEPHONE
- S SWIMMING
- L LAKE, RIVER ACCESS
- V VOLLEYBALL
- D DOG OFF-LEASH PARK
- W WATER BOTTLE FILL STATION
- C CHURCH
- T TRAILHEAD