



WINTER HOURS OF OPERATION

November 25 – January 28	8:30am – 3:00pm
January 29 – February 25	8:30am – 3:30pm
February 26 – April 18	8:30am – 4:00pm
April 19 – May 23 (Whistler Mountain only)	10:00am – 4:00pm

*Go to whistlerblackcomb.com for updated hours of operations. Dates and times subject to change.

CONTACT INFORMATION

Mountain Emergency		604.935.5555
General Information & Reservations		1.800.766.0449
Snow Report	presented by	Whistler 604.932.4211
	Vancouver	604.687.7507

IMPORTANT Smoking of any kind is not permitted on all Whistler Blackcomb property. For more information visit: whistlerblackcomb.com/about-us/smoke-free

Whistler Blackcomb — the Official Alpine Skiing Venue for the 2010 Olympic and Paralympic Winter Games

BOUNDLESS IS A CHOICE

When you choose to discover this place, you choose to have a story to tell. Ski the deepest snow. Revel in the beauty of endless peaks. Let loose in celebrations that electrify an entire village. And discover adventure on a scale unlike anything you've ever seen.

The choice to never settle, to seek adventure, and to do it all for the love of the mountains is at the heart and soul of Whistler Blackcomb. So we invite all of you who come to know us, whether it's for the weekend or for life, to take on our spirit and make the choices that define you.



WHISTLER HELI-SKIING

A Classic Canadian Heli-Ski Experience

Take your vacation to the next level. With exclusive rights to big mountain terrain that includes 173 glaciers and 475 runs over 432,000 acres, Whistler Heli-Skiing has what it takes to go the extra distance. Visit us at the Whistler Heli Store in the Carleton Lodge in Whistler Village or call us.

1.888.HELISKI | whistlerheliskiing.com



BACKCOUNTRY AND BC PARKS

Garibaldi Provincial Park

The area beyond the ski area boundary is neither controlled nor patrolled by the ski patrol. Some ski areas permit skiers and snowboarders to travel beyond the ski area boundary into the backcountry. Backcountry travel can be very hazardous and requires specialized equipment, training and experience. Do not travel into the backcountry if you are not qualified to do so.

For guests looking to explore the backcountry accessible from Whistler Blackcomb there are a number of resources available to boost your safety knowledge and awareness.

Find out more at whistlerblackcomb.com/mountain-info/backcountry



THE WHISTLER SHOPPING EXPERIENCE

Visit our village stores or on-mountain shops for the best selections and local knowledge.

Whistler Mountain	Blackcomb Mountain
▶ Roundhouse Lodge	▶ Rendezvous Lodge
CANSKI	SALOMON
patagonia	Columbia
SHOWCASE	THE NORTH FACE
OAKLEY	

If you have any questions or concerns regarding closures, safety or terrain, please contact the Ski Patrol.

▶ **Mountain Emergency 604.935.5555**

For more information visit: whistlerblackcomb.com/safety

Respect the Mountains

Skiing and riding beyond the area boundary may result in a lengthy hike, an overnight in the wilderness, and/or a potentially costly rescue. If you go, be prepared. Closed means closed. Violators will lose lift privileges.

Respect Others

Respect Slow Zones. These are areas where children and beginners are most likely to be. There are no hits or jumps in this area.

Respect Yourself

Know your limits. There is no disgrace in declining a descent you are not comfortable with.

RECCO

Whistler and Blackcomb Mountains are equipped with RECCO® rescue technology.

OUR COMMITMENT TO ZERO

ZERO net emissions by 2030
 ZERO waste to landfill by 2030
 ZERO net impact to forests and habitat by 2030

SAFETY

Know It, Respect It, Ride It.

▶ If you see an accident on the hill that requires first aid: make a cross with skis or lay a snowboard above the site. Report the location and type of injury to the nearest staff member.

▶ Whistler Blackcomb recommends **helmet usage** for skiing or riding.

▶ Watch for changing conditions — natural or man-made.

▶ Vehicles may be encountered on Whistler Blackcomb Mountains. Please slow down and give them a wide berth.

▶ Irresponsible, reckless, or discourteous skiing and riding on any part of the mountain may result in loss of lift access privileges.

▶ **Caution** snow immersion suffocation from deep snow or tree wells can be fatal. Always ride with a partner. Visit deepsnowsafety.org

▶ Difficulty ratings are relative to each ski area. Skiers and riders should work their way up starting with the easiest run, regardless of their ability level.

▶ Signage and fencing are used to inform you of the presence of a potential obstacle or hazard. Be aware that some hazards are not marked, use caution at all times.

Our Epic Promise

We've committed to a zero net footprint — zero net emissions by 2030, zero waste to landfill by 2030 and zero net operating impact to forests and habitat.

EpicPromise.com/ZeroFootprint



EXPERIENCE PEAK TO PEAK EXPLORATION

Snow School

Uncover your best season alongside adults or children of a similar skill level.

Book lessons with a world-class instructor with offerings from half day to full day and varying group size. Gain new skills and the confidence to explore more of the mountain this season.

whistlerblackcomb.com/snowschoo

Take a Private Lesson as a Family

Make memories together.
 The day is yours to customize. You can spend the morning learning all together, and send the kids off with your guide for the afternoon while you explore. Finish your day by meeting to ski out together, and your kids can show off what they learned that day.



TERRAIN PARKS

Pre-ride, Re-ride, Freeride.

Prior to using Freestyle Terrain, you are responsible for familiarizing yourself with park features and etiquette. Obey all instructions, warnings and signs. Freestyle skills require maintaining control on the ground and in the air. Use of Freestyle Terrain exposes you to the risk of serious injury or death. Inverted aerials are not recommended. You assume the risk.

*Helmets are mandatory in the Highest Level Terrain Park and recommended in all other parks and pipes.

epic MIX

NEW

Find My Friends. Now on EpicMix.

Now you can easily see where your friends are on the mountain all day long.

Whistler Adaptive Ski and Snowboard Program

Our trained and certified instructors and assistants help those with both physical and cognitive disabilities access and enjoy the slopes of Whistler Blackcomb.

whistleradaptive.com

WHISTLER'S AUTHENTIC INDIGENOUS EXPERIENCE

1.866.441.SLCC (7522) | slcc.ca
 Tuesdays – Sundays 10am – 5pm
 @SLCCWhistler #SLCCWhistler

Visit the Squamish Lil'wat Cultural Centre for an authentic Indigenous experience. Join a knowledgeable Cultural Ambassador from either Squamish Nation or Lil'wat Nation for a one-hour guided tour offered on the hour, every hour. Tours include a traditional welcome song, fifteen minute film, exhibit tour, and cedar-rope bracelet making activity. Enjoy indigenous-inspired food from the Thunderbird Café and explore Whistler's largest First Nations Gift Shop.



WHERE TO START

SEE MAP FOR REFERENCE

BEGINNER ZONES

Whistler Blackcomb has ideal learning terrain. No matter what lift you take up, there's an easy route down.

- **Olympic "Mid" Station (Whistler Mountain)** Midway up the Whistler Village Gondola. Slow-skiing Beginners' Zone, easy-loading Olympic Chair and Magic Carpets.
- **Magic Chair Area (Blackcomb Mountain)** Easy-loading triple chair and Magic Carpets, both next to the handy Rentals and Daylodge Services at the base of Blackcomb Mountain.

What's Next?

Once you've got your legs under you, here are just a few ways to explore a bit more of our two mountains.

- **Slow Zones** See yellow highlighted areas on map where the areas are monitored for your safety.
- **Blackcomb Mountain** Expressway to Easy Out accessed from the Blackcomb Gondola is perfect for both skiers and snowboarders. Green Line from the top of 7th Heaven is an easy traverse for skiers.
- **Whistler Mountain** Use Whiskey Jack or Ego Bowl in the Family Zone accessible from Emerald 6 Express and the top of the Whistler Village Gondola.

FAMILIES

With designated family ski areas and a host of other activities for all ages, any time is family time at Whistler Blackcomb.

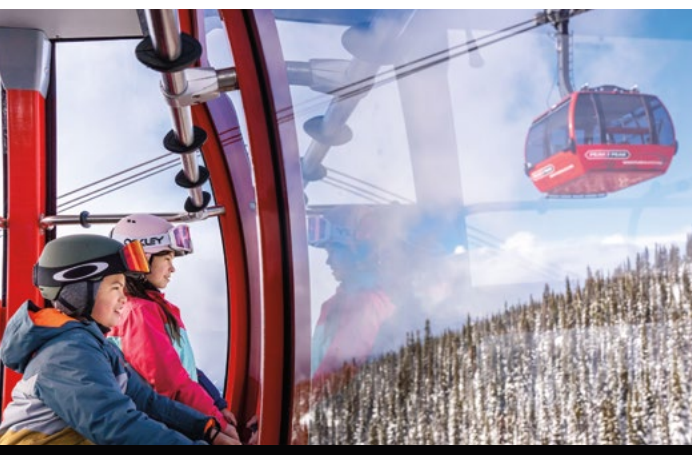
Blackcomb Mountain

- **Children's Adventure Park** Terrain features, colourful characters and even a Magic Castle.
- **Terrain Garden** Simple berms, rails, tabletops and more.
- **bubly® Tube Park** Open at 10am on weekends and 11am on weekdays until 6pm. Located at Base II on Blackcomb Mountain.

Tickets are available online or directly at the Bubly® Tube Park.

Whistler Mountain

- **Tree Fort** Access from Bear Cub trail, near the Big Red Express.
- **Family Zone** Underneath Emerald 6 Express with something for everyone.
- **Harmony Bowl** Steeps, glades, bumps and easy cruisers.
- **School Yard** Underneath Emerald 6 Express, accessible from Ego Bowl or Jolly Green Giant.



↑ FOLD THE INSET MAPS OVER TO VIEW WITH THE MAIN MAP

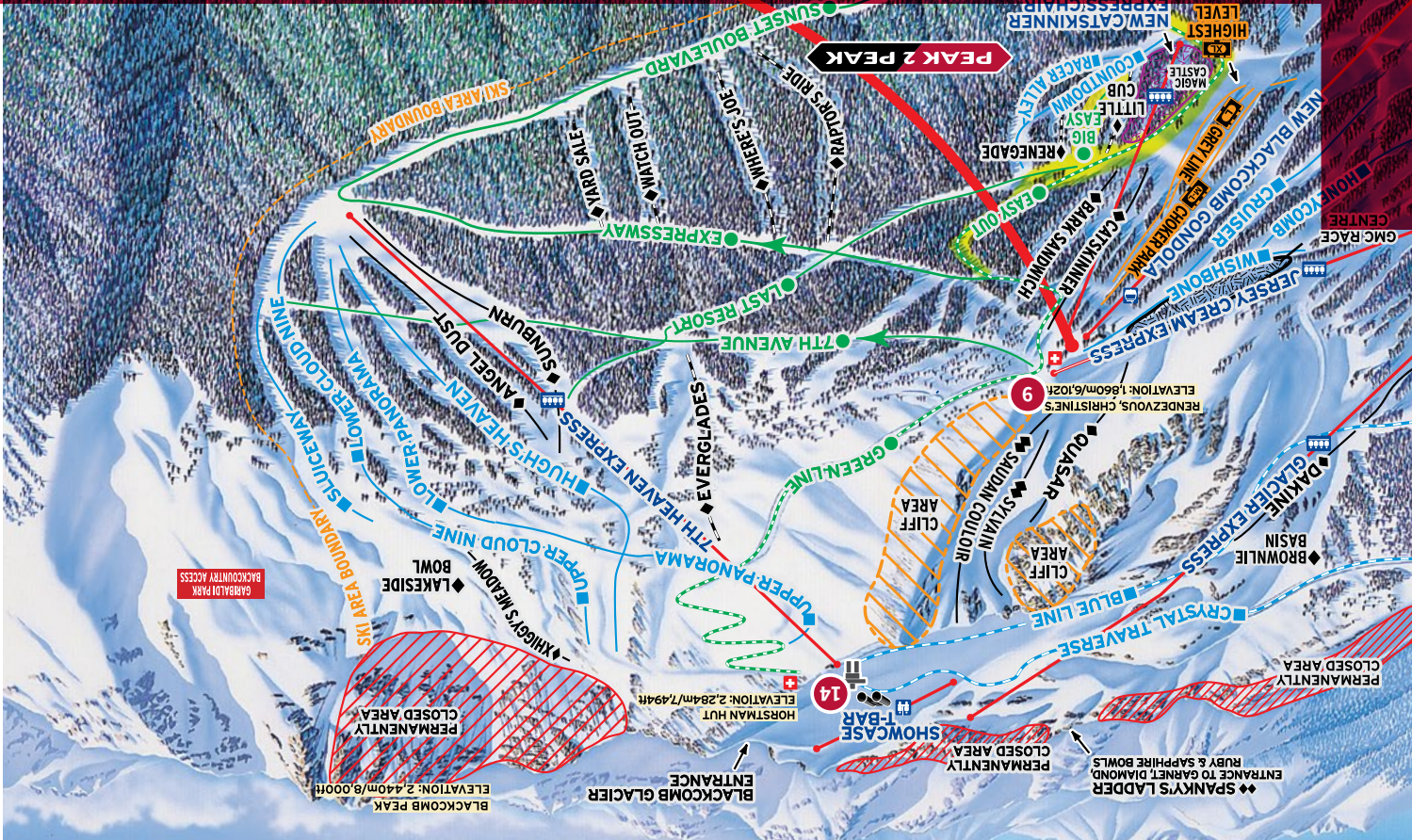
Symphony Amphitheatre — Whistler Mountain

Access to Flute Bowl from the Symphony Express, Harmony Express or Peak Express chairs. Visibility and conditions in Flute Bowl can change rapidly. When in doubt, follow piste trail markers. Please follow all posted signs for boundary notification.



7th Heaven — Blackcomb Mountain

When the sun is shining, slip on the sunscreen and head for Heaven. Take skiers' left for panoramic cruising and amazing across-the-valley views of Whistler Mountain. To return to the Rendezvous, stay to skiers' right on Green Line.



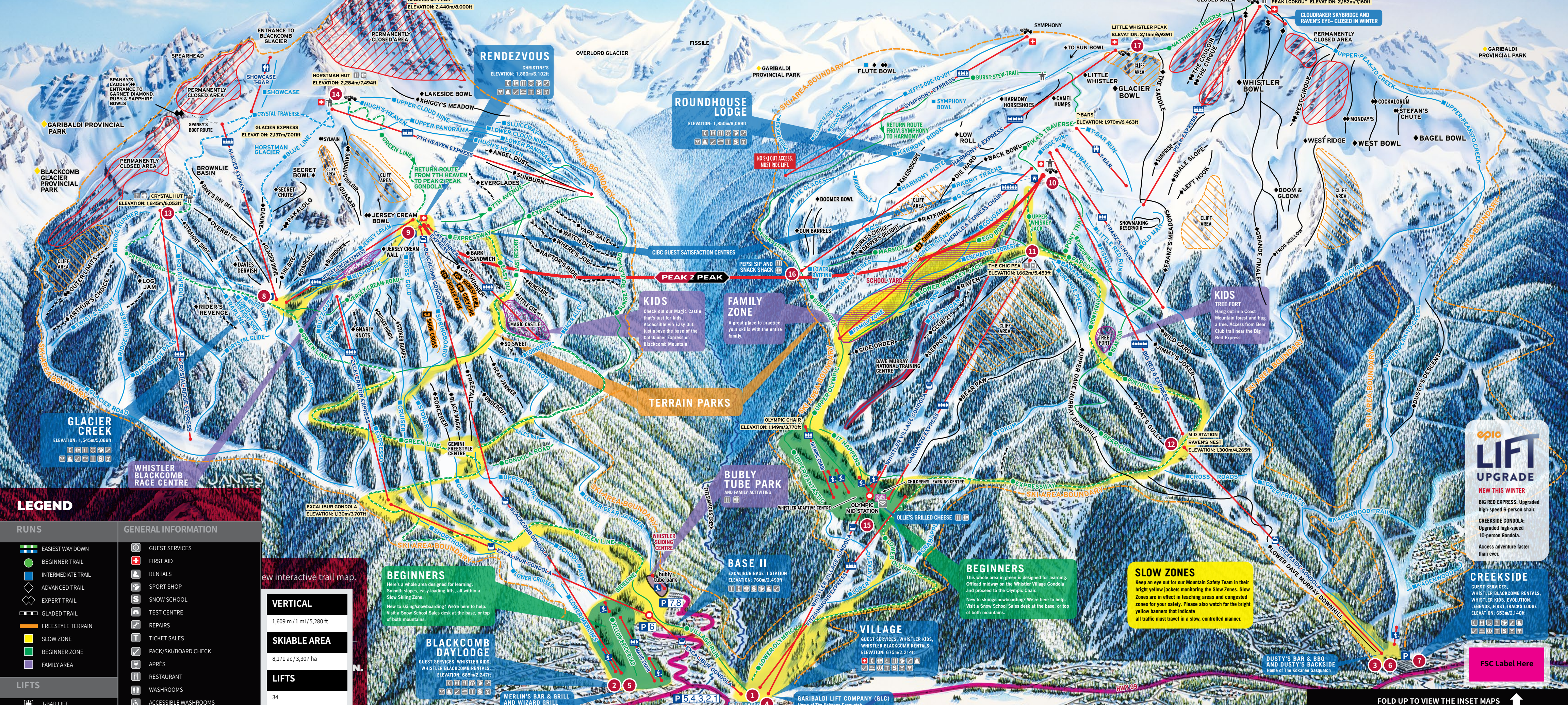
Blackcomb Glacier

Enter from the top of the Showcase T-bar, or experts can use the Spandy's Ladder entrance. Designated runs in this area are located within Blackcomb Glacier Provincial Park and are managed under a Park Use Permit for the purposes of snow and avalanche control. Closures will be in effect when avalanche danger exists and blasting may be in progress.



BLACKCOMB MOUNTAIN

WHISTLER MOUNTAIN



LEGEND

- RUNS**
 - Easiest way down
 - Beginner trail
 - Intermediate trail
 - Advanced trail
 - Expert trail
 - Gladed trail
 - Freestyle terrain
 - Slow zone
 - Beginner zone
 - Family area
- LIFTS**
 - T-bar lift
 - Magic carpet
 - Triple chairlift
 - High speed quad
 - High speed six pack
 - Gondola
- GENERAL INFORMATION**
 - Guest services
 - First aid
 - Rentals
 - Sport shop
 - Snow school
 - Test centre
 - Repairs
 - Ticket sales
 - Après
 - Restaurant
 - Washrooms
 - Accessible washrooms
 - Telephone
 - Provincial park
 - Free Wi-Fi powered by Telus
 - Wonder scenic viewpoints
 - Inukshuk

VERTICAL
1,609 m / 5,280 ft

SKIABLE AREA
8,171 ac / 3,307 ha

LIFTS
34

BEGINNERS
Here's a whole area designed for learning. Smooth slopes, easy-loading lifts, all within a Slow Skiing Zone. How to skiing/snowboarding? We're here to help. Visit a Snow School Sales desk at the base, or top of both mountains.

BLACKCOMB DAYLODGE
GUEST SERVICES, WHISTLER KIDS, WHISTLER BLACKCOMB RENTALS. ELEVATION: 689m/2,274ft

BASE II
EXCALIBUR BASE II STATION. ELEVATION: 760m/2,493ft

BUBLY TUBE PARK
AND FAMILY ACTIVITIES

WHISTLER VILLAGE
GUEST SERVICES, WHISTLER KIDS, WHISTLER BLACKCOMB RENTALS. ELEVATION: 675m/2,214ft

BEGINNERS
This whole area in green is designed for learning. Official midway on the Whistler Village Gondola and proceed to the Olympic Chair.

SLOW ZONES
Keep an eye out for our Mountain Safety Team in their bright yellow jackets monitoring the Slow Zones. Slow Zones are in effect in teaching areas and congested zones for your safety. Please also watch for the bright yellow banners that indicate all traffic must travel in a slow, controlled manner.

CREEKSIDE
GUEST SERVICES, WHISTLER BLACKCOMB RENTALS, WHISTLER KIDS, EVOLUTION, LEGENDS, RITZ TRAILS LODGE. ELEVATION: 653m/2,140ft

KNOW AND RESPECT THESE COMMON SIGNS ON THE MOUNTAIN

- CLOSED**: Indicates a run/area is closed for safety reasons due to active avalanche bombing or high avalanche danger.
- PERMANENTLY CLOSED**: Indicates an area is permanently closed for safety reasons including cliff or cornice danger.
- CAUTION**: UNMARKED ROCKS AND OBSTACLES.
- DESIGNATED UPHILL ROUTE**: Uphill travel on designated routes ONLY.
- NO UPHILL TRAVEL**: Uphill travel on designated routes ONLY.
- WARNING**: DURING LOW VISIBILITY PROCEED WITH CAUTION.
- WARNING**: SKI AREA BOUNDARY NOT PATROLLED.

ALPINE RESPONSIBILITY CODE

There are elements of risk that common sense and personal awareness can help reduce. Regardless of how you decide to use the slopes, always show courtesy to others. Please adhere to the code listed below and share with others the responsibility for a safe outdoor experience.

- Always stay in control. You must be able to stop, or avoid other people or objects.
- People ahead of you have the right-of-way. It is your responsibility to avoid them.
- Do not stop where you obstruct a trail or are not visible from above.
- Before starting downhill or merging onto a trail, look uphill and yield to others.
- If you are involved in or witness a collision or accident, you must remain at the scene and identify yourself to the Ski Patrol.
- Always use proper devices to help prevent runaway equipment.
- Observe and obey all posted signs and warnings.
- Keep off closed trails and closed areas.
- You must not use lifts or terrain if your ability is impaired through use of alcohol or drugs.
- You must have sufficient physical dexterity, ability, and knowledge to safely load, ride, and unload lifts. If in doubt, ask the lift attendant.
- You must have sufficient physical dexterity, ability, and knowledge to safely load, ride, and unload lifts. If in doubt, ask the lift attendant.

Know the code – Be safety conscious. It is your responsibility.

WHERE TO EAT AND DRINK

MISS THE CROWDS AND SKI MORE!
EAT LUNCH BEFORE 11:30AM OR AFTER 1PM

BASE RESTAURANTS

- Bar & Grills**
 - 1 Garibaldi Lift Company (GLC)
 - 2 Merlin's Bar & Grill
 - 3 Dusty's Bar & BBQ
- Quick Service**
 - 4 Garbo's Grill & Espresso Bar
 - 5 Wizard Grill
 - 6 Dusty's Backside
 - 7 Starbucks Creekside

ON-MOUNTAIN RESTAURANTS

- Lodges**
 - 8 Glacier Creek Lodge
 - 9 Rendezvous Lodge
 - 10 Roundhouse Lodge
- Restaurants**
 - 9 Christine's on Blackcomb
Full service dining. Reservations available at 604.938.7437
 - 10 Steeps Grill & Wine Bar
Full service dining. Reservations available at 604.905.2379
 - 10 Umbrella Bar

Alpine Huts

- 11 Chic Pea
- 12 Raven's Nest
Vegetarian
- 13 Crystal Hut
- 14 Horstman Hut

Grab & Go

- 15 Ollie's
- 16 Pepsi Sip and Snack Shack

OFFICIAL PARTNERS OF WHISTLER BLACKCOMB



epic LIFT UPGRADE

NEW THIS WINTER

- BIG RED EXPRESS**: Upgraded high-speed 6-person chair.
- CREEKSIDE GONDOLA**: Upgraded high-speed 10-person Gondola.
- CREEKSIDE**: Guest services, Whistler Blackcomb Rentals, Whistler Kids, Evolution, Legends, Ritz Trails Lodge. Elevation: 653m/2,140ft.

FSC Label Here

THE BEST WAY TO SKI OR RIDE

epic PASS

Free Wi-Fi powered by TELUS available at on-mountain lodges, select viewpoints & slope-side bars.

Stay Connected