

WHISTLER CONFERENCE CENTRE **ARTWORK**

UPPER LEVEL **ARTWORK**

Cori Creed

Grand Foyer

“With Giants”



About The Artist

Cori Creed:

Cori Creed is an established West Coast Canadian painter who captures the coastal landscape with joy and vitality. The wealth of texture and colour in the Canadian landscape provides Creed with the perfect reference for an exploration in painterly process and expression. Reflections of tangled branches observed while canoeing on a tranquil eastern lake; the graphic contrast found in a grove of birches; shadows cast over jumbles of rocks and driftwood on west coast beaches; fields of wild grasses and blooms--all lend inspiration to Creed's work.

Creed was born in Vancouver in 1973. She studied Fine Art at Simon Fraser University and Design at Capilano College. Creed's work has been placed in various private collections across Canada including Bentall Centre, Nordstrom, Lions Gate Hospital Foundation, and British Pacific Properties, among numerous private and corporate collections. Cori Creed has been represented by Bau-Xi Gallery since 2011. She continues to live and paint out of her home and studio in West Vancouver, British Columbia.

“Porteau Cove – There Ain’t no Place
Like You”



“Softly Drifting – Near Lion’s Bay”



“Entrance – Howe Sound”



About The Artist

Corrinne Wolcoski:

Corrinne Wolcoski finds inspiration in the quiet, often overlooked spaces between life's major milestones. These in-between moments - filled with faded memories and subtle experiences - are typically forgotten, yet they hold a quiet richness that deeply informs her work. As she travels along the West Coast, Corrinne is continually moved by the stunning beauty that unfolds between destinations. She often stops spontaneously to photograph or paint plein air, embracing the adventure and serenity of coastal exploration.

This process of seeking landscapes shifts the focus of her journeys. The destination becomes secondary; it is the path itself - the places, textures, and atmospheres in between - that become central. Observing these moments offers her a profound sense of calm and a deeper connection to the land. The emotional imprint of these encounters is what she carries back to the studio. Each canvas is a reflection of that connection, a visual memory of place, and a meditation on the beauty discovered along the way.

The idea she had for the series was to depict the Sea to Sky corridor on the drive from Vancouver to Whistler in the Conference Centre corridor.. as you walk from the entrance down the hall you pass these iconic scenes of the drive towards Whistler from Vancouver.

Andy Anissimoff

Ballroom Hallway Stairwell

“Whistler Blackcomb”



About The Artist

Andy Anissimoff:

Originally trained as an Industrial Designer, graduating with a speciality in Automotive Design from Humber College in Toronto in 2002. In 2005, he settled in Squamish, British Columbia, to pursue a life in the mountains. The area inspired Anissimoff to commit to developing his creative side to its fullest and become a dedicated full-time artist. He has built his business around personally sharing his creations with people from all over the world.

Anissimoff's medium of choice is Acrylic paint because it offers a balance of colour quality and resistance to cracking and fading. Fun fact: Acrylic paint is used to restore old cracked and faded oil paintings! Over his painting career, Anissimoff has created over 400 paintings. He has a personal collection of approximately 15 pieces and the rest have found homes in all corners of the world. This site features approximately 150 of Anissimoff's personal favourites and he is continuously grateful to you for taking the time to view them. Every one of you who has purchased an original, recreation (print) or commission has been a part of his artistic journey and contributed to his drive to produce quality and vibrant pieces.

LOWER LEVEL **ARTWORK**

Andy Anissimoff

Valley Foyer Hallway

“Run”



“Big Yellow Bear”



“Chief Boat Launch”



Andy Anissimoff

Soo Valley

“Seagrams”



Ray Natraoro (Ses Siyam) - (*Skwxwú7mesh Úxwumixw*)

Valley Foyer

”Killer Whale Panel”



About The Artist

Ray Natraoro (*Salish*):

Ray Natraoro (formerly Natrall) apprenticed under Kwakwaka'wakw artist, Simon Dick, and Coast Salish artists, Klatle-Bhi and Rick Harry. He demonstrates the talent and discipline that is the mark of a successful artist.

Natraoro is deeply involved with the traditional culture of his people, teaching the Salish language and involving himself in the singing and dancing of his cultural heritage.

He declares himself: "I have been carving masks, totem poles, and model canoes since 1994. I learned to carve canoes from my late uncle. Canoe building can be traced back through five generations in my family. I have helped carve three race canoes, and in 1998 I was the Master Carver on a 37-foot sea-going canoe for my nation." In addition to his carving, Natraoro has been creating many limited edition prints since 2007.

Indigenous artwork on the Pacific Northwest Coast often incorporates figures and animals that are related to crest symbols. Crests have been passed down through families and have varying meanings depending on the context and association with a nation, clan, or family. The figures depicted in contemporary Northwest Coast Indigenous artwork also have varying meanings but there are some common characteristics from a range of sources, including oral histories and artist descriptions.

Killer Whale is a common crest and being among many groups of the Northwest Coast, and one of the most prevalent depictions in the artwork. In some Haida oral traditions, Raven-Finned Killer Whale is a whale-chief and characterized by a Raven-headed dorsal fin. There are also Haida depictions of two-, three-, and even five-finned Killer Whales. It has been suggested that these supernatural figures may have originated from sightings of whale pods surfacing, with multiple dorsal fins visible above the water. Killer Whale's familial bonds and skillfulness in teamwork can oftentimes lead to associations with communication, family, unity, and travel.

Pat O'Hara

Valley Foyer

“Varied Edges”



“The Peak”



“Sky”



“Celebrate”



“Jazz”



About The Artist

Pat O'Hara:

Pat O'Hara is an established abstract painter based in Vancouver. O'Hara works in a lyrical abstract style in her primary medium of acrylic paint. For O'Hara, the process of art making is a game of challenge, chance and obsession. Travel, emotion and environment inspire the colour and composition of O'Hara's work, in which spontaneous layering of line and mark making create sensuous movement and lively energy.

Pat O'Hara was born in Burns Lake, British Columbia and studied art at the University of British Columbia and Emily Carr College of Art and Design, where she graduated with the Merit Award for painting in 1981. Her process of art making over the past 30 years has included a variety of experimental techniques using paint-dipped strings to pull paint across two-dimensional surfaces, as well as cutting, layering, collage and weaving canvas. O'Hara's work can be found in private and public collections all across Canada including Air Canada, Pan Pacific Hotel in Vancouver, Scotiabank, Citibank, and Polygon Homes. O'Hara continues to live and work out of her home and studio in Vancouver, Canada.

The installation on display are Acrylic on panel with Resin, 2017 pieces.

Chili Thom

Valley Foyer

“A Forest For The Trees”



“Mountains In My Mind”



“The Floating Tusk”



About The Artist

Chili Thom:

Michael “Chili” Thom (1976 - 2016) was a man of the mountains. A wilderness guide turned artist, he was always happiest and most comfortable when he was out exploring in nature. Teaching himself to paint at age 20, Chili found a way to take the emotion and majesty of the landscapes he loved, mostly from his home in British Columbia, and translate it onto the canvas.

Completing over 400 original pieces over his 20-year career, Chili loved to play with colour, motion and the passage of time in his work.

When Chili Thom passed over to the other side in November of 2016, he left a legacy. His creative spirit and enthusiasm for life inspired us to get outside, to make things happen, and to enjoy each moment spent with friends, especially out amid the power and beauty of the forests, coastlines and mountains that he loved.

"Nature has given me a lifetime of inspiration," Chili once said. "In just a few decades, I have seen how mankind has damaged our planet at an exponential rate. I love snow. I love clean water, fresh air, wild animals. There come's a point where you have to look inside yourself and ask, 'What am I willing to sacrifice to protect something that has given me the life of my dreams?'"

As an artist, Chili was known for his colourful land and seascapes, painted in layers of bright colours and featuring his distinctive, signature style. His art transports the viewer to remote places of incredible natural beauty. “In nature,” Chili believed, “there are a lot of challenges you have to power through. You suffer out a storm, or a long slog up to a summit, but you are always rewarded with something beautiful.” Beloved throughout the Sea to Sky corridor, he was named Whistler's “Best Artist” in the Best of Whistler poll for the 14th time in a row in 2016, and post-humously was voted “Favourite Whistlerite” for 2016.

“Water Sprite Reflected”



“Each Step is New”



“Back to Turtle Bay”



“Where We Belong”



“Aperture”



Andrea Mueller

Rainbow Theatre Foyer



“Spell Bound” & “Intrinsic Guide”



“The Wind Will Guide You”

About The Artist

Andrea Mueller:

With a degree in Fine Arts from the prestigious Ontario College of Art and Design in Toronto, she's a seasoned artist who's been painting the town of Whistler in all the colors of the rainbow for over two decades. But she's not just a painter; she's a creative event producer and art instructor, sharing her creative wisdom with folks of all ages. From exciting Paint Nights to exclusive private gatherings and artful escapades for kids.

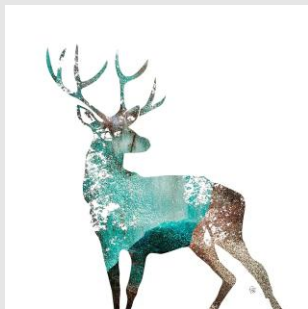
Andrea's creative magic isn't limited to her studio; she has sprinkled her artistic magic on corporate clients, including well-known brands like ROXY, the Hoji Ski Series for 4FRNT skis, Corona, Clifbar, the Canadian Soccer Association. She was the 2019 feature artist for Whistler Blackcomb. Her art isn't just confined to canvas; it's out there, living its best life in local shops, restaurants, hotels and her artwork can be found on the Whistler Winter banners for the Municipality of Whistler.

But there's more to this artistic powerhouse! In late 2022, she embarked on an exciting new adventure by opening her own Gallery, Artisan shop, and creative class workshop space, ART POP, nestled in Creekside Village. You might just catch a glimpse of her in her natural habitat, creating her next masterpiece or inspiring fellow artists.

“Cloud 9 – The Tusk”



“Spirit Deer”



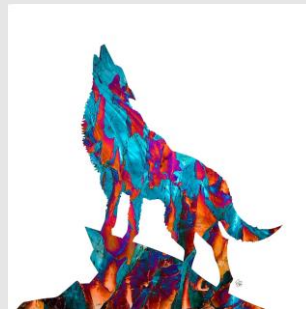
“Spirit Bear”



“Spirit Eagle”



“Florenca Bay Wolf”



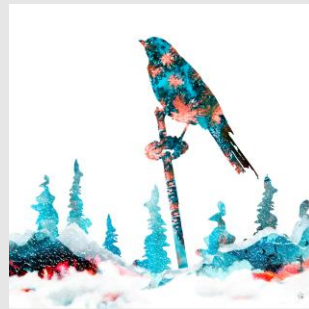
“Snowy Owl”



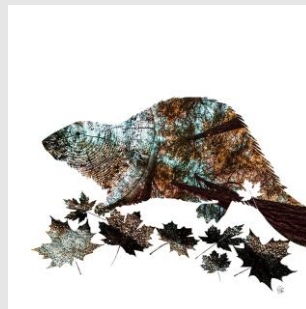
“Spirit Marmot”



“Whisky Jack”



“The Great Canadian Beaver”



“Winter Spirit”



“Tusk Reflection”



About The Artist

Stacey Bodnaruk:

Stacey Bodnaruk is a Canadian, West Coast-based artist and photographer who has combined a passion for the Pacific with her art, creative design, photography and interior design background.

Stacey creates unique and meaningful artwork that inspires and evokes emotion. Her fine art photography pieces expertly blends multiple layers of original photos, which are harmoniously intertwined to create a dream-like story.

Stacey draws inspiration from the mountains and ocean – an influence of power and beauty that she passionately incorporates into both her personal and professional life. She captures images from mountain vistas, Canadian wildlife, surf breaks, old growth forests and wild places around the world. Images from her current collections are curated from travels around British Columbia, Hawaii, Mexico, Costa Rica, and from her home town of Whistler.

Her approach, which she terms ‘artography’, layers and fuses anywhere from 3-10 photos, that are blended to create a vibrant, one-of-a-kind artwork that would never be achieved from one photo alone.

“Mount Garibaldi”



“Wedgemount”



“Mount Tantalus Glow”



“Equilibrium”



“Tantalus Ridge”



“Sanctuary”



About The Artist

Nat Tuk:

Nat Tuke is an artist and graphic designer living in Skwxwú7mesh/Squamish, BC. Her art is heavily inspired by those 'This is it' moments - that perfect wave; the fleeting alpine glow; a setting sun glittering on a glassy ocean. Her flowy, vibrant paintings celebrate the beauty and purity of the natural world as a great gift that has been given to us, one which we must protect and cherish.

Nat grew up in Melbourne, Australia, and moved to the Sea to Sky region in 2017, where her love of the dramatic landscape of the west coast has since translated into countless artworks. When she isn't painting or designing, she is out climbing, skiing and backpacking throughout BC soaking up as much inspiration as she can.

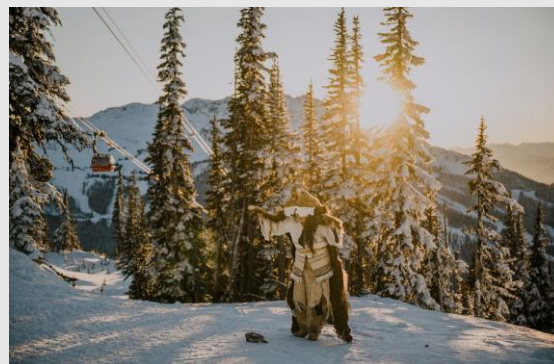
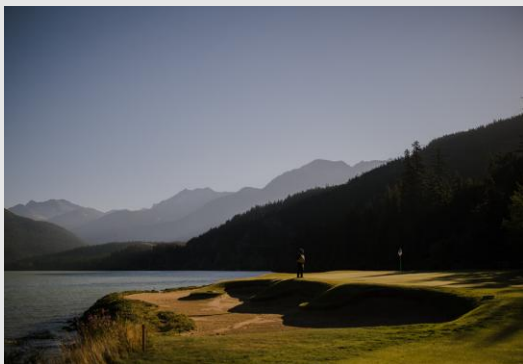
Nat draws inspiration from the natural world, combining reference photos with imagination to craft stylised paintings. With a background in graphic design and illustration, her style features balanced compositions, bold, flat colours and clear, sharp lines. Her landscapes derive their dynamism from the strength of their flowing lines, and use of vibrant colour. Sunlight and warmth are a recurring theme in her paintings, resulting in dramatic high contrasts with a lot of subtle blends.

Nat is very aware of the fragility of the natural world and the important role it has in our lives, and believes strongly in the power of art as a means to convey this message. Our environment is under threat and our climate is in crisis. In her paintings though, she chooses to celebrate and cherish the beauty of the natural world as a great gift that has been given to us; that must be preserved and protected.

Logan Swayze

UNCEDED
S7ULH TEMÍXW / TI TMICWKÁLHA / OUR LAND

Fitzsimmons



About The Artist

Logan Swayze:

In 2015, Logan founded a wedding photography business based in Whistler, capturing authentic moments with honesty and beauty.

Over the years, the scope of work has expanded to include elopements, engagements, family portraiture, and various commercial projects. With a passion for connecting with people, Logan is always eager to document the love shared between individuals and their relationship with the natural world.

One project of particular significance is UNCEDED, an exhibition produced in collaboration with the Squamish Lil'wat Cultural Centre. The project explored the meaning behind the word "unceded" - often heard in land acknowledgments - through powerful portraits of Indigenous peoples on their land. By blending modern and traditional elements, the exhibition sought to evoke a deep sense of belonging.

This project marked an important step toward reconciliation with Indigenous communities, and Logan was honored to help bring it to life.

Jenna Jones

Wedgemount



“Peak”



“Black Tusk”



“Wedge”



“Peak To Peak”

About The Artist

Jenna Jones:

From an early age, the world of creative arts held a deep sense of wonder for Jenna Jones. Her journey into the arts was nurtured by incredibly supportive parents who encouraged her creative pursuits from adolescence through to adulthood. In her late twenties, following several solo adventures abroad, Jenna took a leap of faith and was accepted into an art school for photography - a pivotal moment that awakened her creative calling.

After graduating, she began making art on the small deck of her apartment in Kitsilano, Vancouver. Working with just three feet of space, she performed resin pours using a blue tarp draped over a chair and a portable BBQ. Friends and early clients affectionately dubbed the space The Blue Tarp Studio. From these humble beginnings, Jenna's journey has grown into something remarkable, culminating in her current studio space in Whistler, British Columbia.

Now based between a shared studio in Vancouver and life in the breathtaking Whistler mountains, Jenna's creative world has flourished. Alongside her husband and as a proud bonus mom to two wonderful daughters, her family has become her greatest source of inspiration and learning. One of the most valuable lessons they've taught her - that all meaningful things in life require time and patience - has become a foundational element of her artistic philosophy.

This belief is embedded in every H ritage piece: each work is a lifetime of one, shaped by years of practice, and made to be shared for a lifetime.

The art pieces displayed at the Conference Centre are framed watercolor fine art prints.

Chili Thom

Spearhead A

“Across the Valley”



“Peak to Creek”

